



TECHNOLOGY SOLUTIONS TRANSFORMING CONSTRUCTION LAYOUT

# Trimble Field Link

# Trimble Field Link

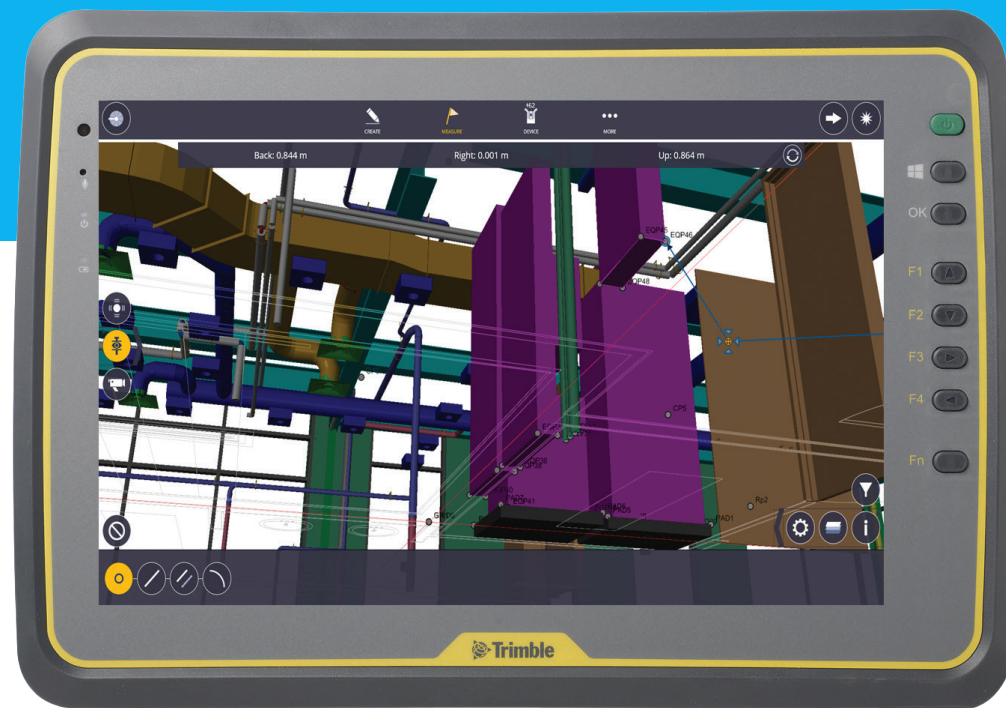
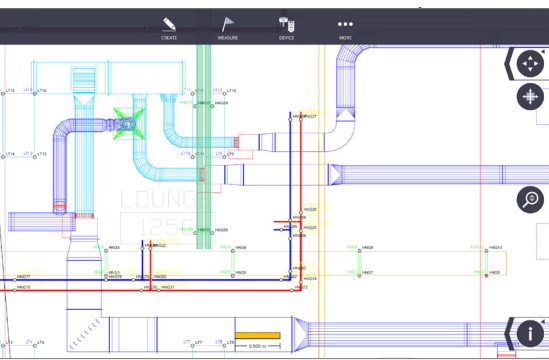
## Smaller Margins Require Smarter Technology Investments

Projects these days leave little room for error to stay profitable. With tight budgets on nearly every project, contractors know that a lack of efficiency can affect the ability to bid better and build better. Success relies on the coordination of key variables to make sure costly rework is avoided even as timelines shrink.

To stay ahead in such competitive times, contractors need a partner with deep industry knowledge rooted in how people work. And, with increased reliance on 3D models and model coordination, having a technology portfolio that delivers precision, visibility and optimized control is necessary for success. Trimble's innovation and leading reputation in the construction industry comes from understanding the contractor experience. It's a thoughtful process of listening first, then optimizing the right solutions for our customers.

## Enter Trimble Field Link

Trimble Field Link is the definitive construction layout software solution **designed specifically for contractors** – not surveyors. Featuring the right combination of tools for the each layout job, the solution includes the Trimble Field Link software powering the ruggedized Trimble Tablet and delivering a useful connection to a variety of layout tools. This unified combination of hardware and software increases productivity and accuracy in the field, reduces rework, provides easy-to-use, task-based workflows and delivers a greater return on investment.



## Trimble Field Link

Taking full advantage of the Trimble Tablet's processor and multi-touch screen functionality, Trimble Field Link has been designed to work the way you work. Featuring intuitive workflows, office (BIM) to field connection, 2D & 3D job data in the field and an easy to use interface, Trimble Field Link is the single software solution contractors trust for their construction layout tasks.

### One software means one solution for all layout tasks

Never switch between multiple software solutions or controller units again. With a simplified user interface (UI) and improved task-based workflows, Trimble Field Link now works with a range of instruments for both interior and exterior layout including Trimble Robotic Total Stations, the Trimble Rapid Positioning Tool and GNSS receivers. Field layout crews can now use the most suitable positioning technology for unique layout tasks—without switching between multiple controller units or field software, and requiring no additional training.

### Better visibility - connecting the office (BIM) to the field

Give field crews the visibility to the detailed information they need to make faster, more accurate decisions. Trimble provides contractors the only process for construction-ready BIM, connecting them to the important field details and actionable items for project visibility and ongoing maintenance. Featuring CAD-based field point creation solutions as part of the detailing process, contractors can easily export a design file and import that file into Trimble Field Link - helping to reduce errors and maximize productivity.

#### Advantages include:

- ▶ View and execute field stakeout routines within 3D models created in popular BIM detailing packages
- ▶ View field point attributes created in the office that define various data points such as: manufacturer, component type and size, etc.
- ▶ Collect field point deviations within the stakeout routines and export for use in BIM detailing solutions back in the office.
- ▶ Create design locations from CAD such as endpoint, midpoint, arc/circle, node, insertion, and intersection.



### Modular Feature Packs – Get only what you need.

Scalability and choice is essential when considering new software. With tighter budgets, contractors want to purchase a solution that delivers the functionality they need with the scalability to grow. Trimble's modular feature packs provide contractors the flexibility to implement only the functionality that they need, and to scale incrementally as their business grows.

### Customizable, easy-to-use interface

With an interface that's easy to navigate and featuring the ability to customize views, users are up and running faster with less downtime for learning. Additionally, users have the ability to customize their view of the layout screen to view in full-screen mode, as a list, as a 2D overhead map, and as a 3D map. Featuring a "Bullseye" view in layout mode, horizontal and vertical in-tolerance notifications are displayed when the prism is near the field point.



## Trimble Field Points

### Create 2D and 3D field points the way you want

Trimble Field Points is designed for the contractor utilizing AutoCAD® or Revit® and needing the ability to easily create 2D and 3D field points within their preferred design file. Users are able to:

- ▶ Quickly and easily auto-insert their field layout points for use with Trimble Field Link for easy stakeout in the field
- ▶ Direct transfer of layout files via Trimble Connect
- ▶ Perform QA/QC with as-laid out points

### Seamless insertion of field layout points

Trimble Field Points provides seamless creation of field points such as hanger or sleeve locations via simple, intuitive point creation workflows. These workflows allow for faster implementation and utilization throughout any organization already familiar with AutoCAD or Revit design platforms. Additionally, Trimble Field Points provides contractors with a go-to design-to-construction solution by allowing the creation of control points, inserting manual points or generating automatic point locations to streamline the creation of layout data in their model files.

### Performing QA/QC with as-laid out points

Contractors can import field point data into the Trimble Field Points software, while staying within their preferred design platform, to assist with their QA/QC workflows for comparison in the model.

## Trimble Field Link Office

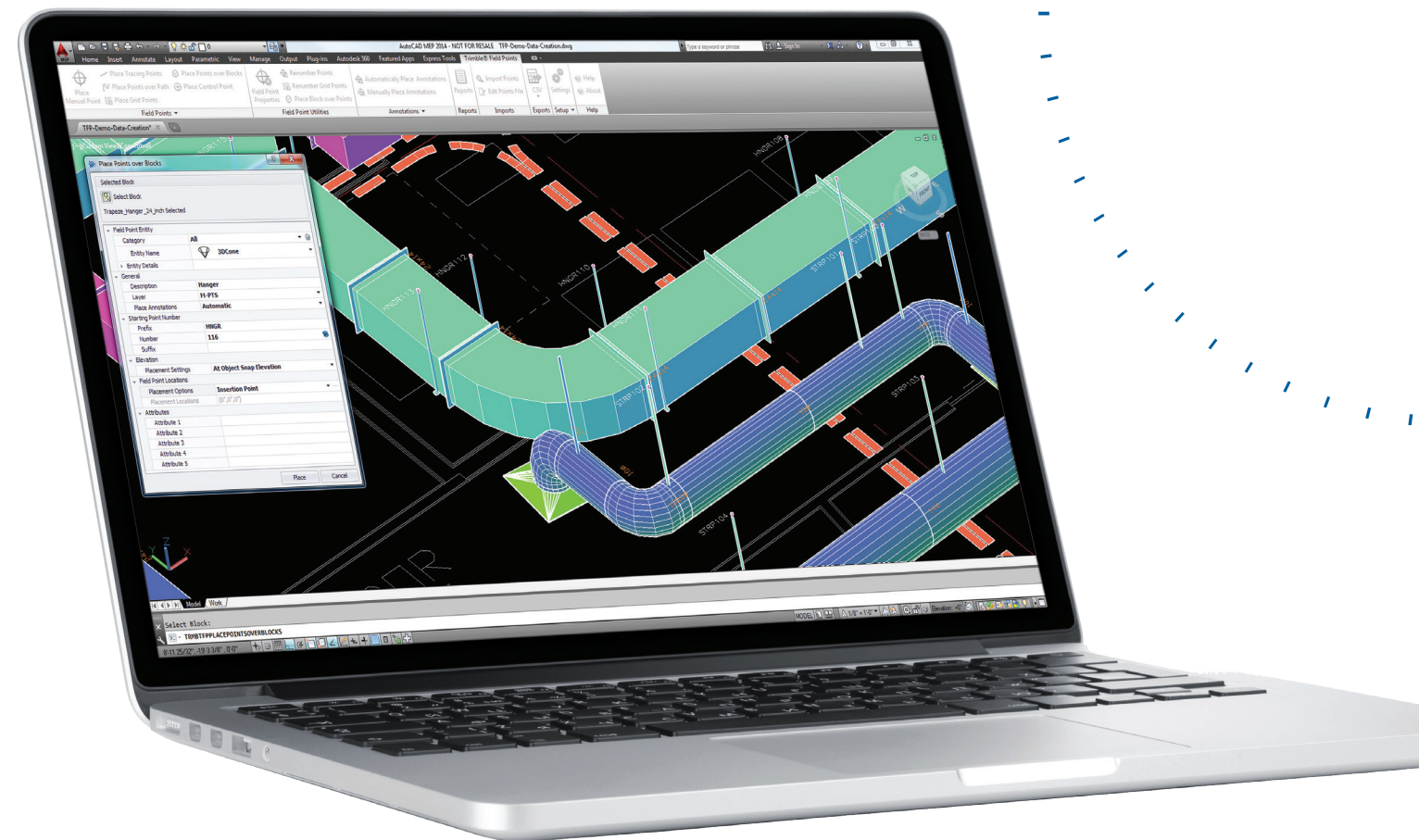
### Simplify your data prep and the analysis of field data

Trimble Field Link Office is a simple and easy-to-use tool for preparing and checking layout data for the field. With the common interface between the office and field versions of Trimble Field Link, contractors experience increased productivity and more accurate data on their projects. Trimble Field Link Office allows contractors to:

- ▶ Prepare layout points for the field
- ▶ Double check the files sent to field crew
- ▶ Perform QA/QC on the already laid out field points

### No CAD? No problem

With 2D and 3D models or digital vector PDFs to prepare field data, many contractors require the use of CAD. With Trimble Field Link Office, no CAD is necessary. Trimble Field Link Office provides a simplified tool to prepare models and data for field crews to use with field layout tasks. It also provides an interface to review data and reports that have returned from the field and keeps this information as a record of the completed job.



# Hardware

## Innovative. Practical. Construction-specific.

Hardware products designed for the specific needs of contractors.

### The right tool for the right job - always!

One of Trimble's core commitments is offering contractors the right hardware products for the right job. Our best-in-class solutions are designed specifically for contractors to complete simple or complex tasks in the field, supporting the unique needs of a contractor.



Trimble Robotic Total Station (RTS) Series

Trimble Robotic Total Stations provide continuous measurement information for the accurate layout of design data. On the jobsite, contractors can set up the total station in a convenient, visible location and perform positioning up to 700 meters away, so that dangerous or difficult locations can be reached safely.



Trimble Rapid Positioning Tool (RPT)



Created specifically for common layout jobs on the construction site, the Trimble Rapid Positioning Tool automates the measuring of distances up to 100 meters away, finding positions faster and more accurately than a tape measure ever could. Designed with smart features for easier use, the Trimble Rapid Positioning Tool includes a 300° vertical field-of-view for overhead work, and with integrated Autostationing™, the system self-locates with no leveling required. A highly visible green laser makes marking a spot easier and Trimble VISION technology provides operators with the same visibility that the instrument sees for more accurate and efficient layout jobs.



Trimble R8s

Delivering sub-centimeter position data, contractors can gain confidence in the accuracy of their site work and utility layout. While Robotic Total Stations are important tools on the jobsite, line of sight or other obstacles may make them difficult to use for certain site activities. Global Navigation Satellite Systems (GNSS) are a great alternative for accurate site layout when RTS's aren't feasible. Trimble Field Link paired with the Trimble R8s GNSS delivers an easy-to-use system with a construction layout solution designed for contractors, not surveyors. The Trimble R8s is ideal for site applications including: underground utilities, footings, pilings, retaining walls, light pole placement and trenching activities.

## How to select the right layout tool

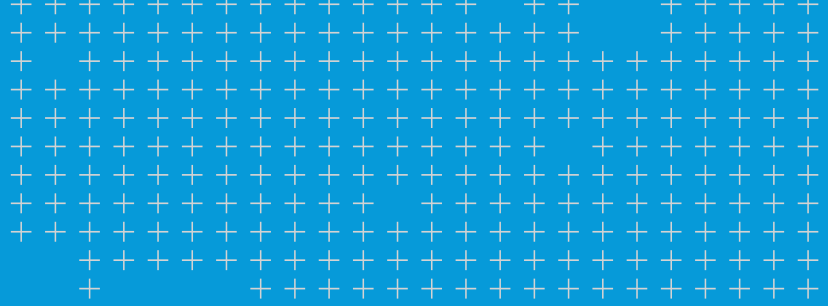
	New Construction	Renovation Project
 <b>Site work</b> i.e. Underground Utilities	RTS R8s (determined based on line of sight)	RTS R8s (determined based on line of sight)
 <b>Ondeck Layout</b> i.e. Metal Deck & Concrete Slabs	RTS – long range RPT – short range	RTS RPT
 <b>Interior Layout</b> i.e. Overhead Existing	RTS	RPT (recommended) RTS



### Trimble Kenai Tablet

Engineered for harsh field conditions, the Trimble Kenai Tablet is rugged and built to withstand the daily abuse of construction work. It meets stringent military standards for drops, vibration and humidity; and with an IP65 rating, it is protected against dust and water. Other features include:

- ▶ Outdoor direct sunlight readable color display
- ▶ 10 inch multi-touch capacitive touchscreen
- ▶ Microsoft® Windows 10 Professional operating system
- ▶ 8 GB DDR3 DRAM
- ▶ 8 MP Camera with autofocus, geo-tagging and LED flash
- ▶ Bluetooth® 4.0 and W-Fi b/g/n
- ▶ Gorilla® Glass panel
- ▶ Extended battery for a full day of layout on the jobsite
- ▶ Easy to read and operate – even with work gloves



# Transforming the way contractors work

In an ever-evolving industry, we understand the importance of providing the tools that allow contractors the power to bid and build better and ultimately stay in front of the competition. By supporting the entire project lifecycle with a full continuum of solutions, we connect hardware and software with your team and workflows for success today and long into the future.



**BuildingPoint Pacific**  
833 Montague Ave.  
San Leandro, CA 94577  
**510-618-2550**

21505 Bents Court NE  
Aurora, OR 97002  
**503.280.1888**

[www.BuildingPointPacific.com](http://www.BuildingPointPacific.com)



**ASIA-PACIFIC**  
Trimble Navigation  
Singapore PTE Limited  
3 HarbourFront Place  
#13-02 HarbourFront Tower Two  
Singapore 099254 SINGAPORE

**EUROPE**  
Trimble Germany GmbH Am  
Prime Parc 11 65479 Raunheim  
GERMANY

**NORTH AMERICA**  
Trimble Inc.  
10368 Westmoor Drive  
Westminster CO 80021 USA

© 2017 Trimble Inc. All rights reserved. Trimble, the Globe & Triangle logo, and Trimble Field Link are trademarks of Trimble Inc., registered in the United States and in other countries. All other trademarks are the property of their respective owners.

TRANSFORMING THE WAY THE WORLD WORKS

